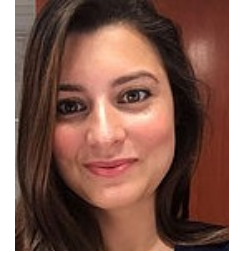


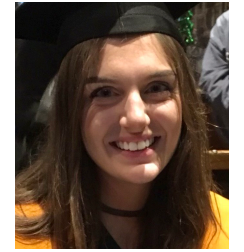
Take part in research!



Dr Jo Moss



Dr Natalie Bozhilova



Lauren Jenner

Opportunity for individuals with Prader-Willi Syndrome:

We want to find out about strengths and difficulties in social abilities among children and young people with Prader-Willi Syndrome, and how these may relate to autism traits.

We are looking for individuals with **Prader-Willi Syndrome** aged **4-19-years-old**, to complete some fun activities, including tasks that demonstrate **social skills** and **verbal/non-verbal abilities**. Parents will be asked to fill out some questionnaires and complete an interview. The whole session takes **2-3 hours**.

You can visit us at University of Surrey to take part and we will reimburse your travel expenses. Or we can visit you at home. Some tasks can be completed remotely.



Interested? Please scan the QR code or email l.jenner@surrey.ac.uk for more details

This research is supported by Cerebra and approved by the University of Surrey Ethics Committee: FHMS 20-21 181